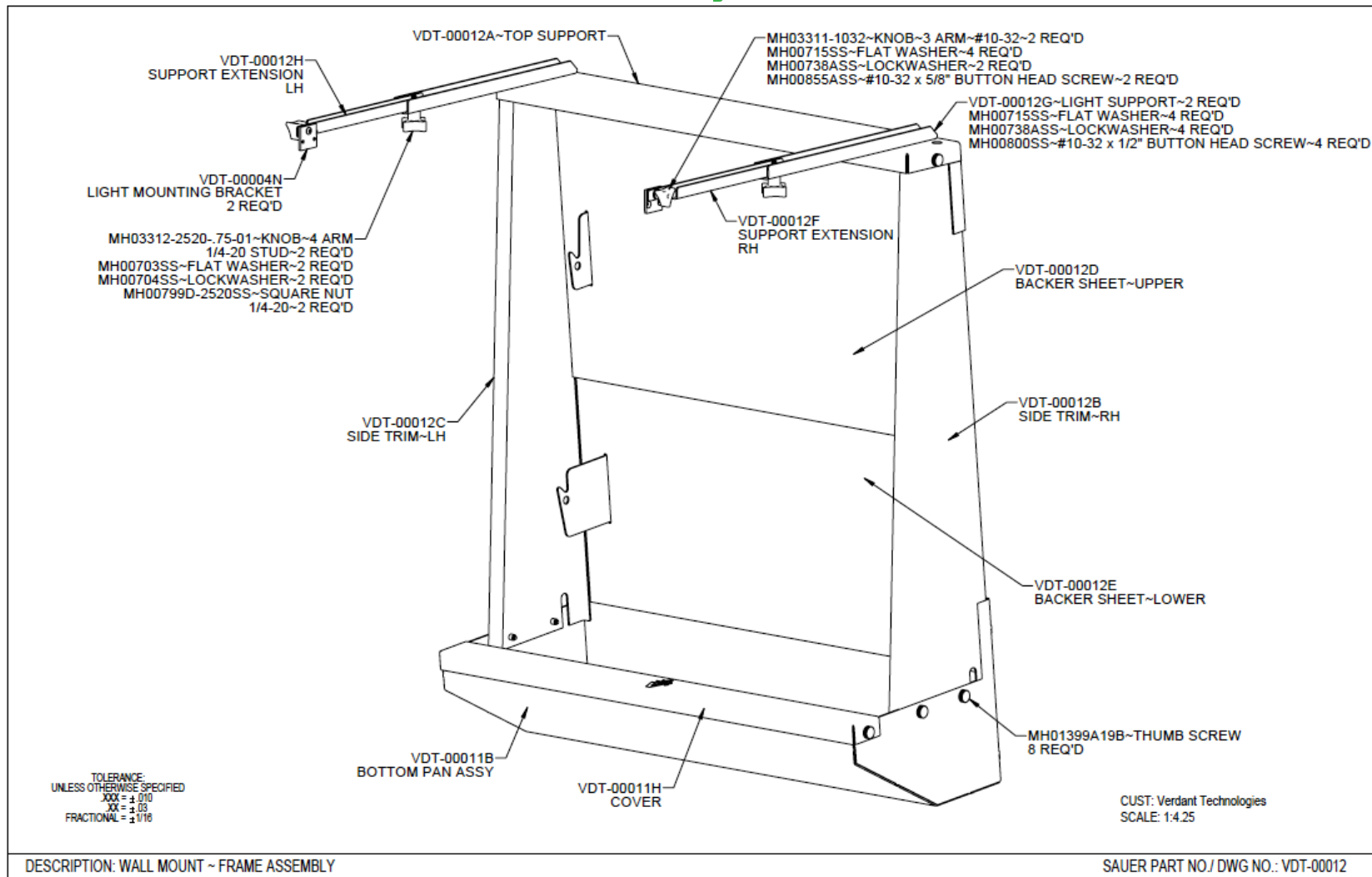


Indoor Kitchen Gardens

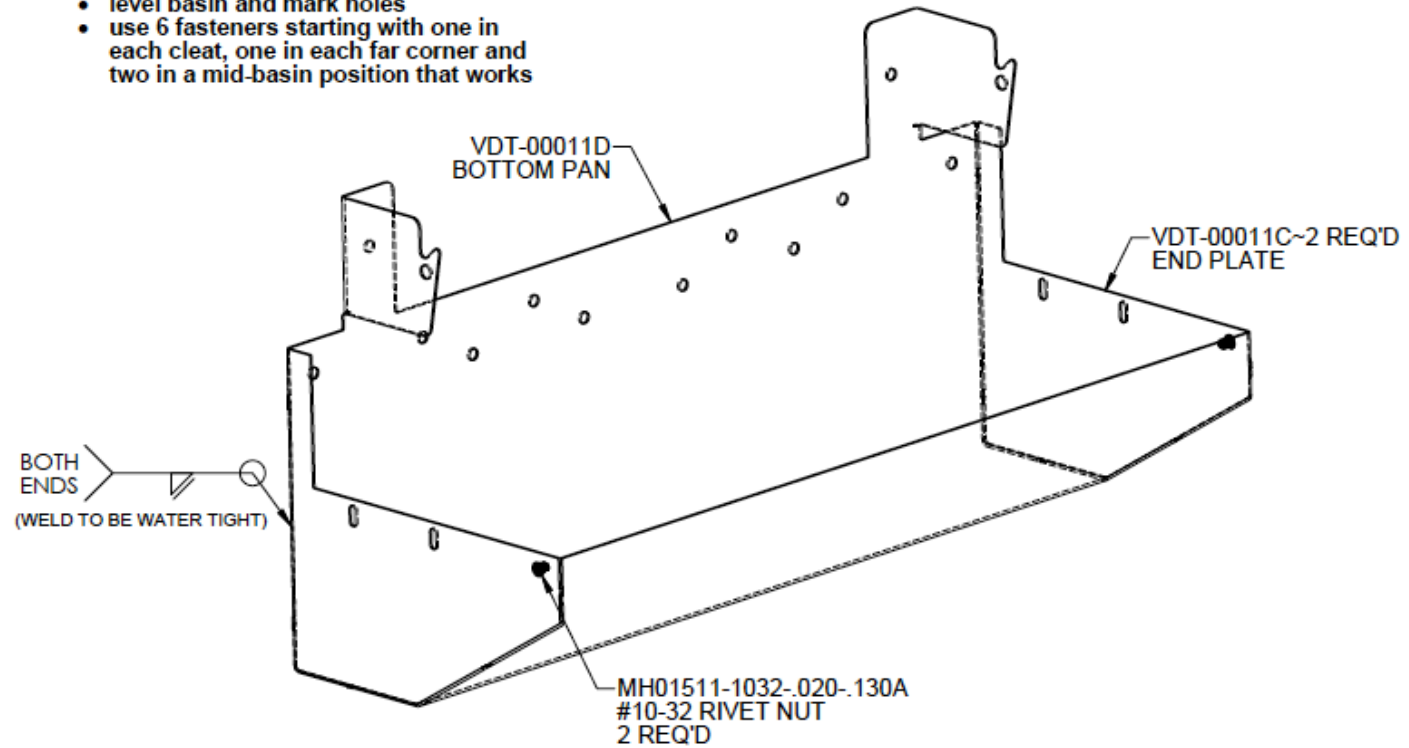


- Position and Install Basin first
- Temporarily set wire in basin cleats
- Position Top to fit wire in cleats and mark holes
- Install Top with fasteners
- Install lower moisture barrier over cleats
- Install upper moisture barrier over cleats
- Set wire in final position engaged in all 4 cleats
- Temporarily install both side panels to test fit and adjust top if needed
- Snap trays on wire
- Set pump in basin inside wire cleats
- Run drip lines in trays
- Set supply tubing and connect to pump fitting and drip lines
- Zip Tie supply tubing in place
- Connect light and pump to power
- Fill Basin and test irrigation
- Place Vardensok in trays
- Install side trim and cover with thumb screws



#1 - Install Basin on Wall First

- select position
- level basin and mark holes
- use 6 fasteners starting with one in each cleat, one in each far corner and two in a mid-basin position that works



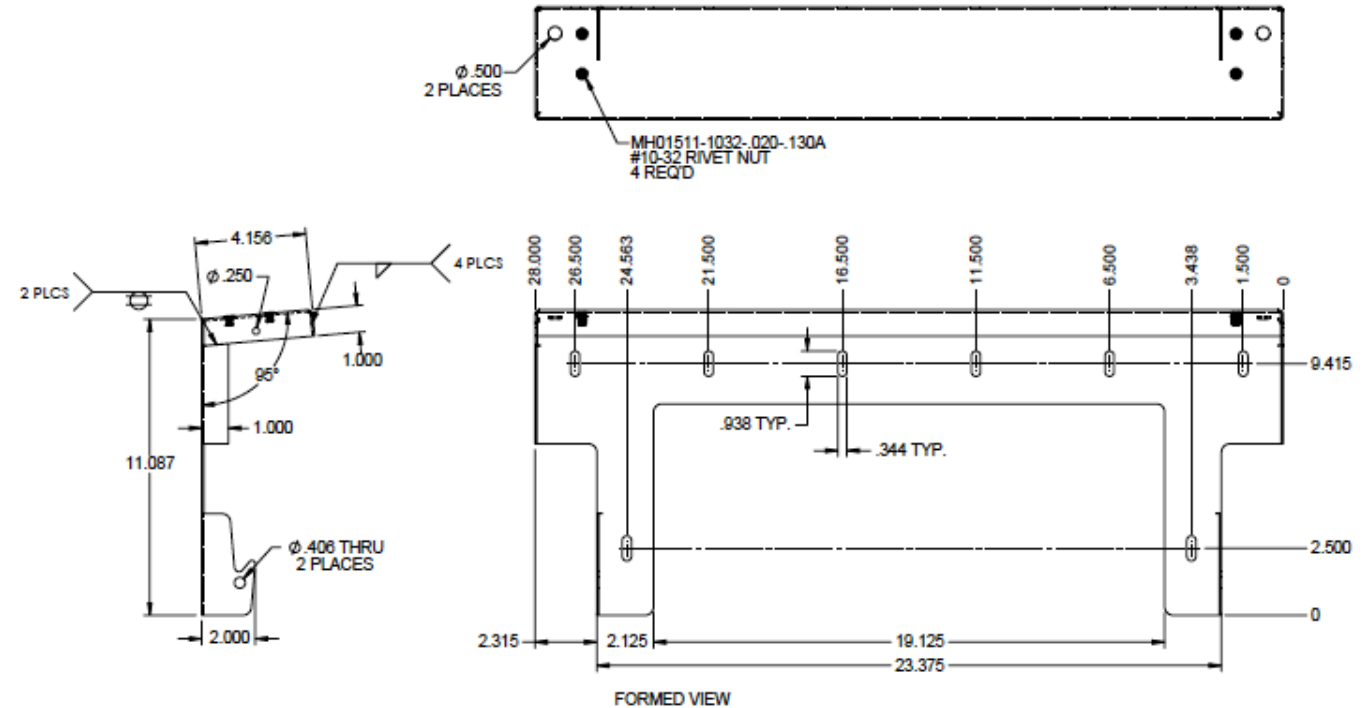
DESCRIPTION: BOTTOM PAN ASSY

SAUER PART NO / DWG NO.: VDT-00011B

CUST: Verdant Technologies
SCALE: 1:4

#2 - Install Top Support After the Bottom Pan has been set and the wire panel is positioned

- position the top with the wire resting in the bottom pan cleats
- fit the top cleats to the wire so that the wire rests in all 4 cleats
- level and mark the holes to drill
- use 5 fasteners - 2 at cleats, 2 at corners and 1 in mid-top



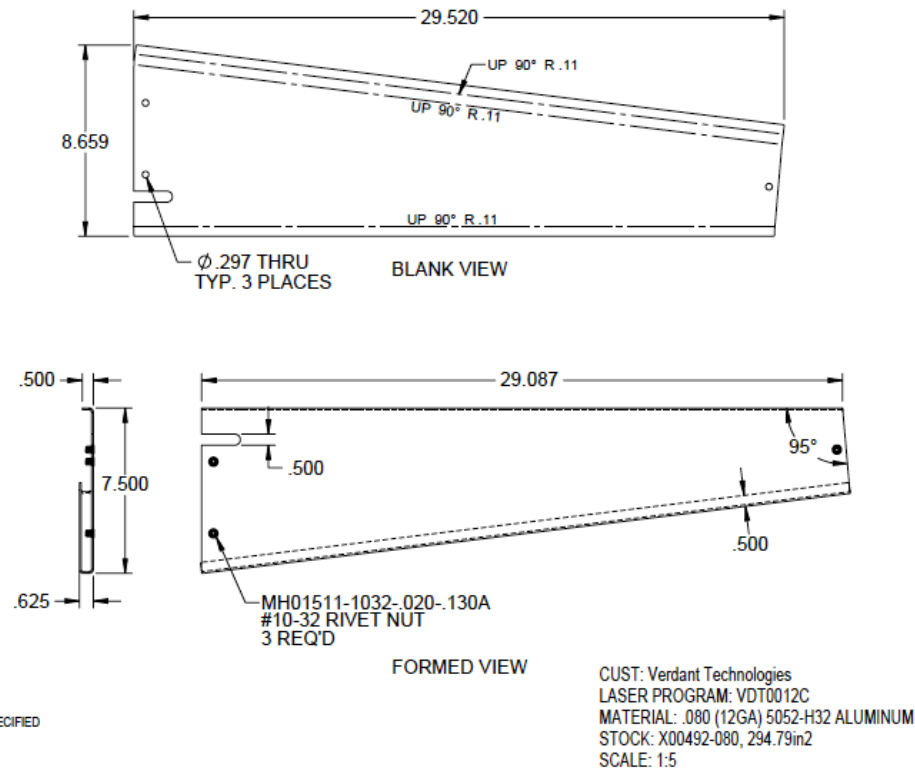
TOLERANCE:
UNLESS OTHERWISE SPECIFIED
XXX = ±.010
XX = ±.03
FRACTIONAL = ±1/16

CUST: Verdant Technologies
LASER PROGRAM: VDT0012A
MATERIAL: .080 (12GA) 5052-H32 ALUMINUM
STOCK: X00492-080, 520.84in2
SCALE: 1:3.5

DESCRIPTION: TOP SUPPORT

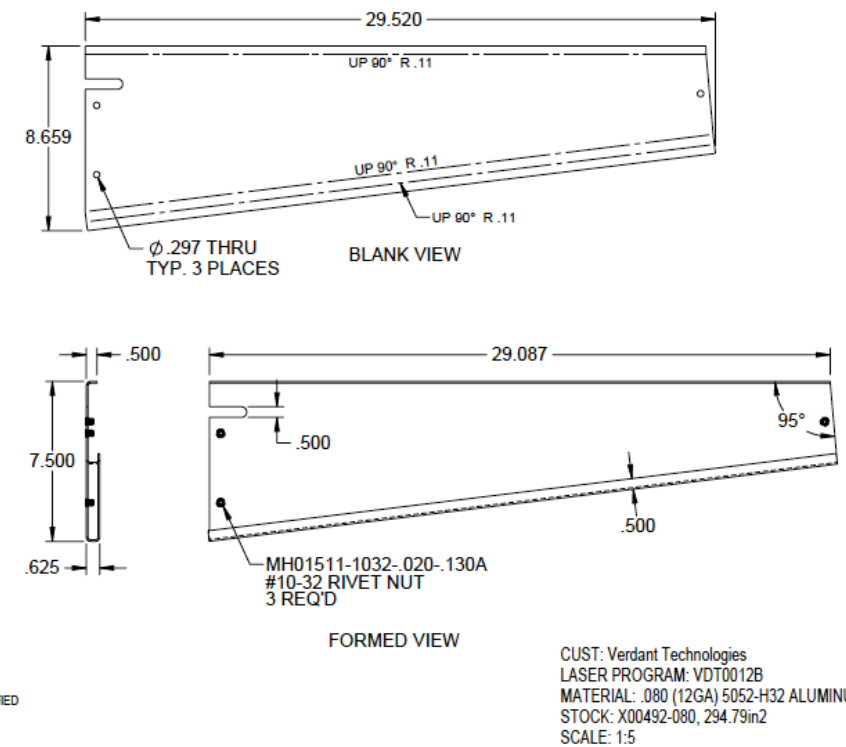
SAUER PART NO./ DWG NO.: VDT-00012A(SHEET 1 OF 2)

Side Panels for Left and Right – To be installed once the kitchen garden assembly has been completed



DESCRIPTION: SIDE TRIM-LH

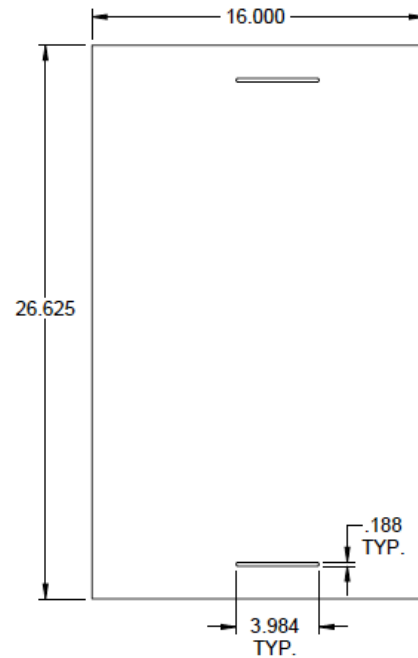
SAUER PART NO./ DWG NO.: VDT-00012C



DESCRIPTION: SIDE TRIM-RH

SAUER PART NO./ DWG NO.: VDT-00012B

Moisture Barriers for Top and Bottom – To be Installed over cleats after top cover and water basin have been permanently attached to wall

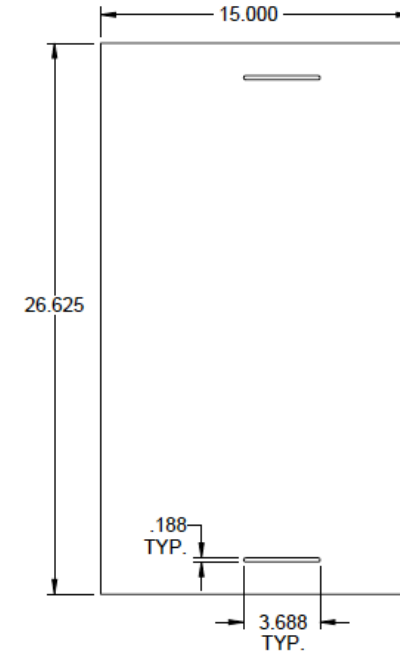


TOLERANCE:
UNLESS OTHERWISE SPECIFIED
.XXX = $\pm .010$
.XX = $\pm .03$
FRACTIONAL = $\pm 1/16$

CUST: Verdant Technologies
LASER PROGRAM: VDT0012D
MATERIAL: COROPLAST SHEET
STOCK: CUSTOMER SUPPLIED
SCALE: 1:5.5

DESCRIPTION: BACKER SHEET~UPPER

SAUER PART NO. / DWG NO.: VDT-00012D



TOLERANCE:
UNLESS OTHERWISE SPECIFIED
.XXX = $\pm .010$
.XX = $\pm .03$
FRACTIONAL = $\pm 1/16$

CUST: Verdant Technologies
LASER PROGRAM: VDT0012E
MATERIAL: COROPLAST SHEET
STOCK: CUSTOMER SUPPLIED
SCALE: 1:5.5

DESCRIPTION: BACKER SHEET~LOWER

SAUER PART NO. / DWG NO.: VDT-00012E

